

WOODAN: towards a European database of wooden archaeological artifacts

Kristof Haneca¹, Koen Deforce¹, Silke Lange^{2, 3}, Jelte van der Laan³, Stephan Nicolaij³
 (1: Flanders Heritage Agency – Belgium // 2: BIAx Consult – The Netherlands // 3: WOODAN Foundation – The Netherlands)

www.woodan.org

WOODAN = archaeological & chronological context + species identification

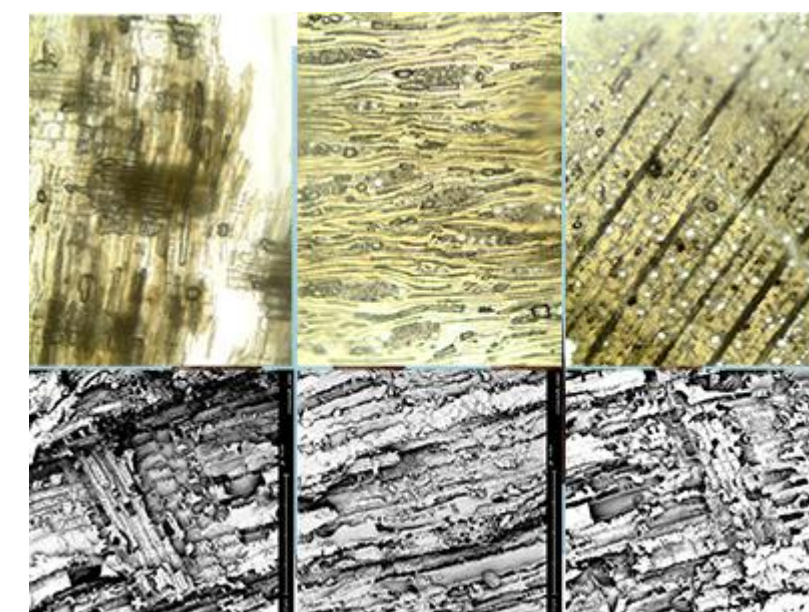
Plate, Middle Ages, Antwerp - Belgium
Fagus sylvatica



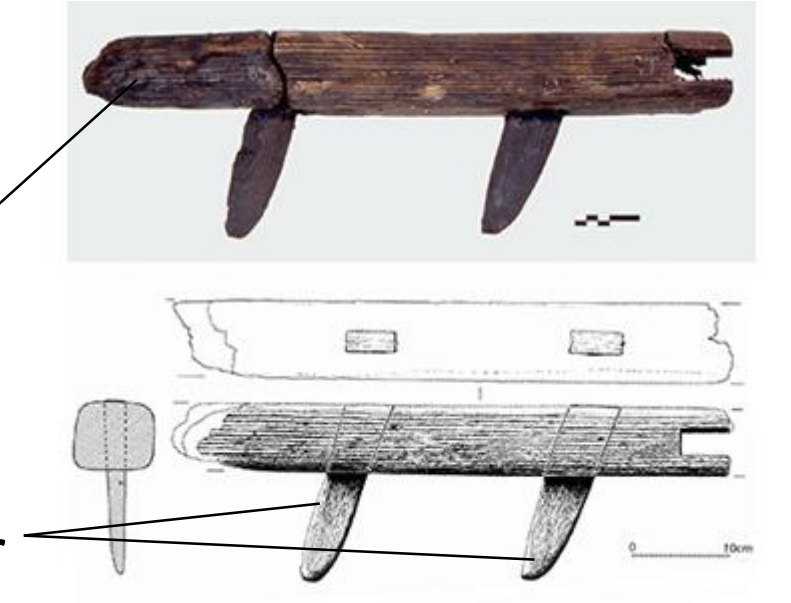
Wheel, Roman, Gent - Belgium
Quercus sp.



Knife handles, Post-Medieval shipwreck in the North Sea
Taxus sp.



Harrow, Early Roman, Poppel - Belgium
Quercus sp.



Plowshare, Iron Age, Brede – The Netherlands
Quercus sp.



Spoke wheel, Late Middle Ages, Kolham – The Netherlands
Quercus sp.



Cooking bucket, Bronze age, Doetinchem – The Netherlands
Alnus sp.



Multilingual interface: Dutch, English, German, French

Visual presentation of advanced queries

Table overview of selected data & export function

WOODAN IN SHORT

THIS IS WHAT WE DO AT WOODAN AND WHAT SETS US APART



Many finds
In WOODAN we have a collection of a few thousand archaeological wooden artifacts. All finds have been collected by archaeologists or amateur archaeologists and in many cases have been published in separate reports.



Synthetic
WOODAN started from a synthesizing study for merging many separate Malta reports. While this research has been completed, we will continue with our mission to collect and publish data.



International
After a start in the Netherlands, WOODAN soon began to look beyond the national borders. We presented the system at, and started collaborating with archaeologists from Belgium, Ireland, Lithuania, Austria, Germany ...



Multilingual
To break through country borders it is necessary to break through language barriers. WOODAN has therefore developed its own system for translating the data. The database system now runs in English, French, German and Dutch.



Modern technology
WOODAN can be opened through various devices and systems. A MySQL database runs behind the website and we work with PHP and JSON to unlock the data.



Smart search
For the website it is important that it is easy to use. WOODAN interprets your search, regardless of whether you are searching on a type of wood, on a location, on types of objects, or on a specific period...

PAST

WOODAN started in 2015 from a project subsidized by the Netherlands Department of Cultural Heritage. The goal of this project was to synthesize all wooden artifacts from archaeological excavations from 1997 onwards (Malta archaeology).

The catalogue and analysis were finally published by Silke Lange in 2017. Where this book focusses primarily on categorizing and describing the many archaeological wooden finds, WOODAN was launched as an easy-to-use and online reference catalogue.

PRESENT

We are now a few years later and in 2018 the database was embedded into the newly established **WOODAN Foundation**.

The foundation has two objectives:
 - To collect and publish information about wooden archaeological finds.
 - To stimulate research on wooden archaeological objects.

The WOODAN Foundation has stated that it wants to be an independent foundation, whereby making a profit is not an objective.

FUTURE

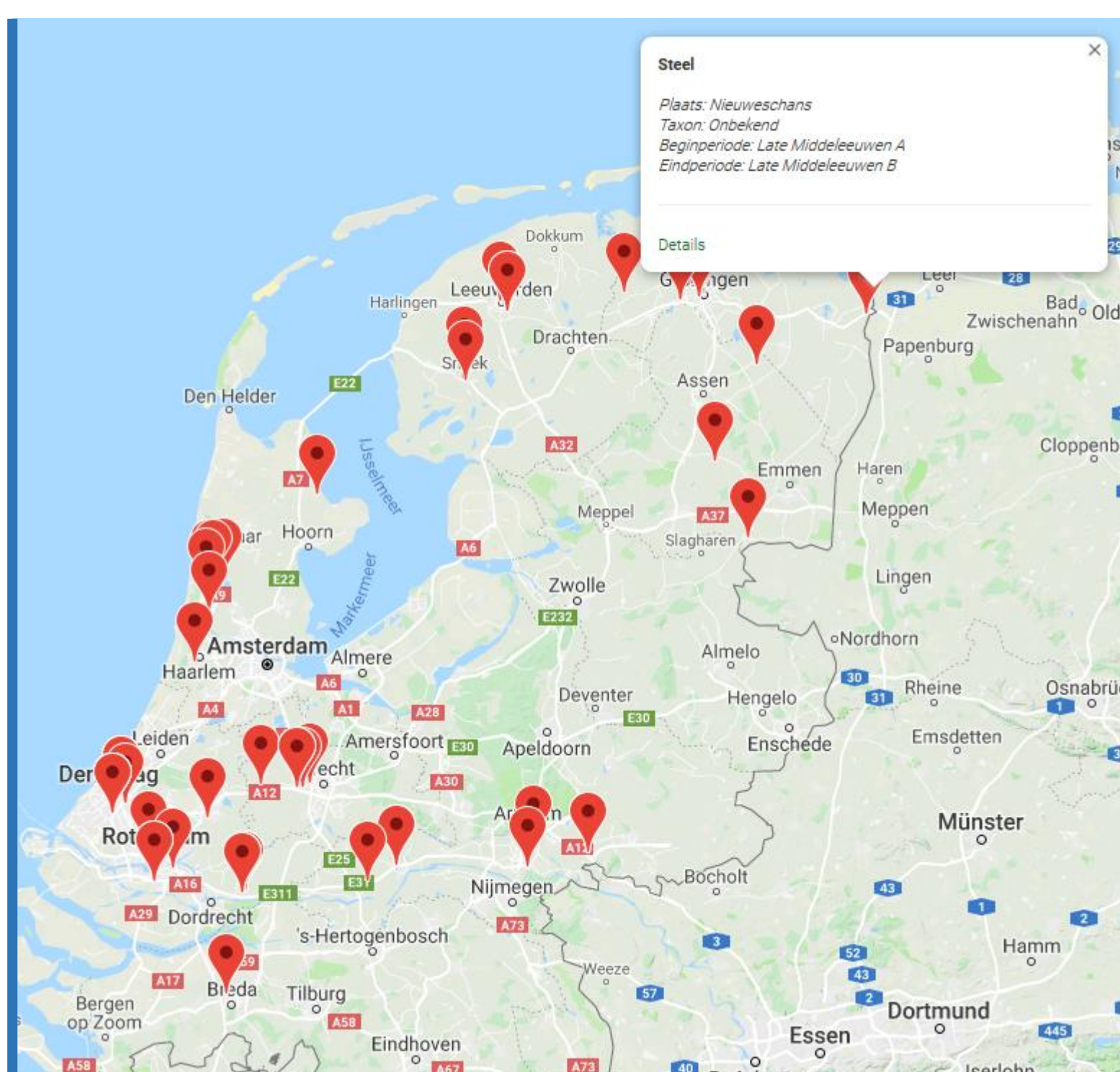
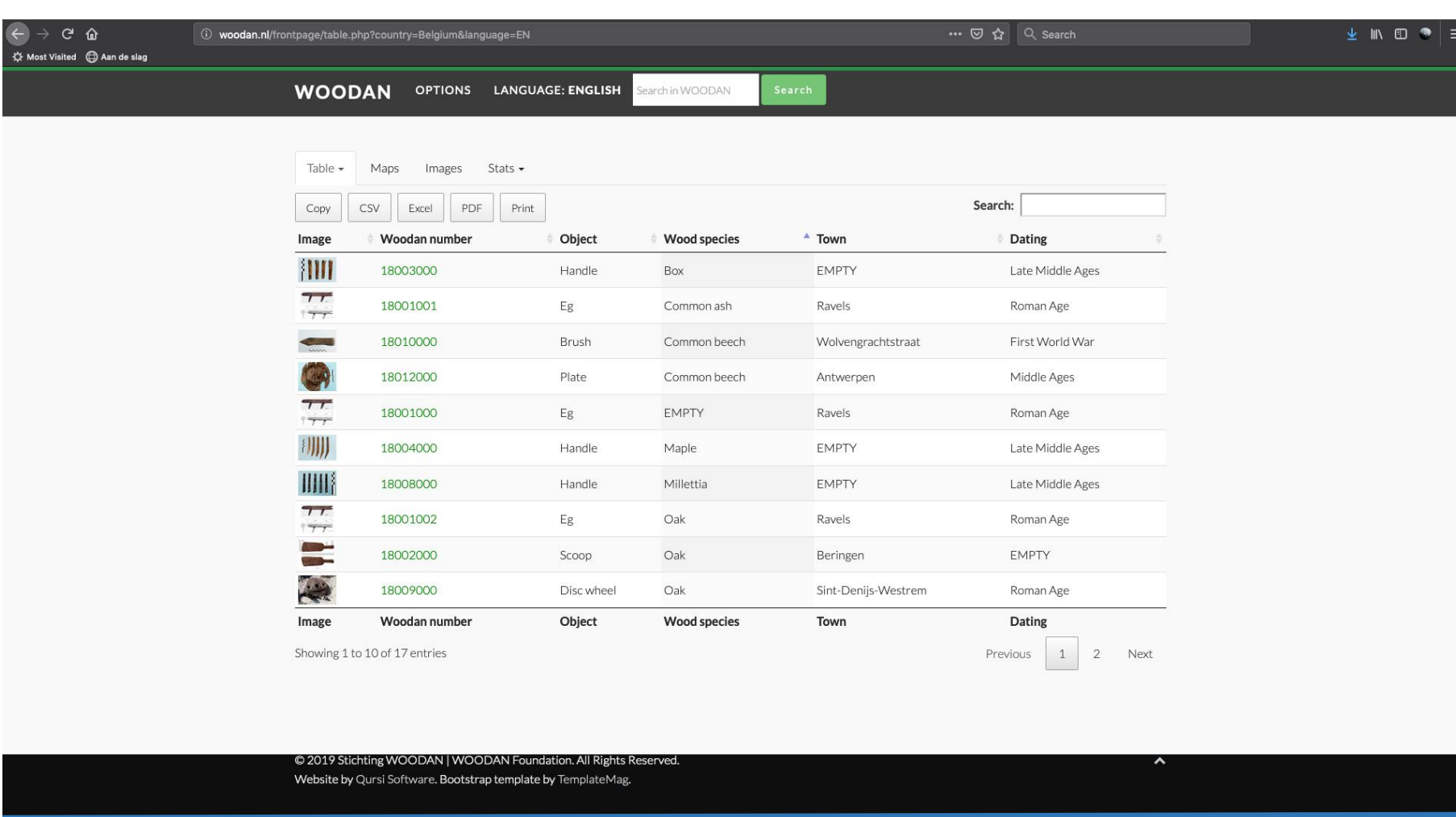
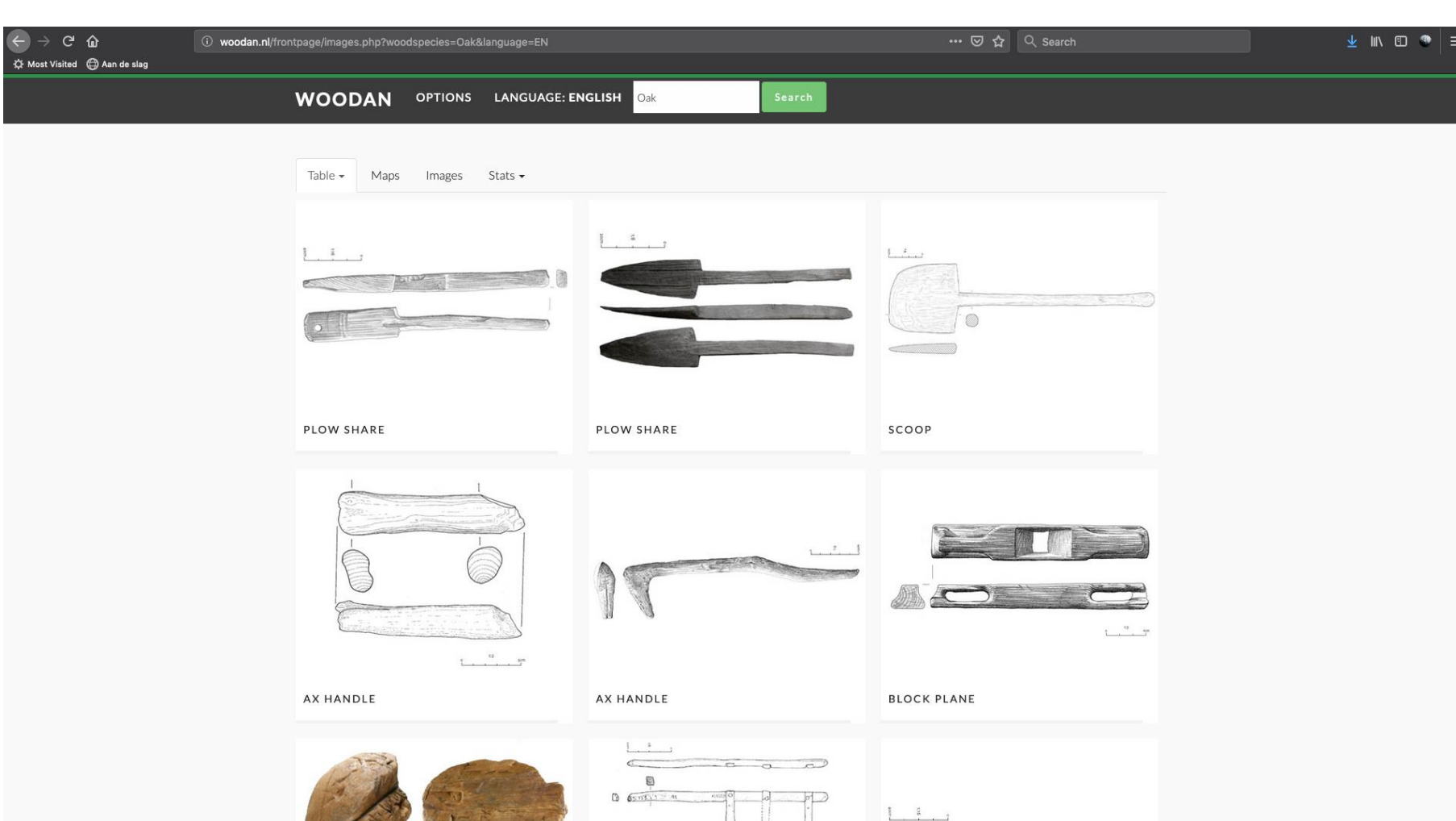
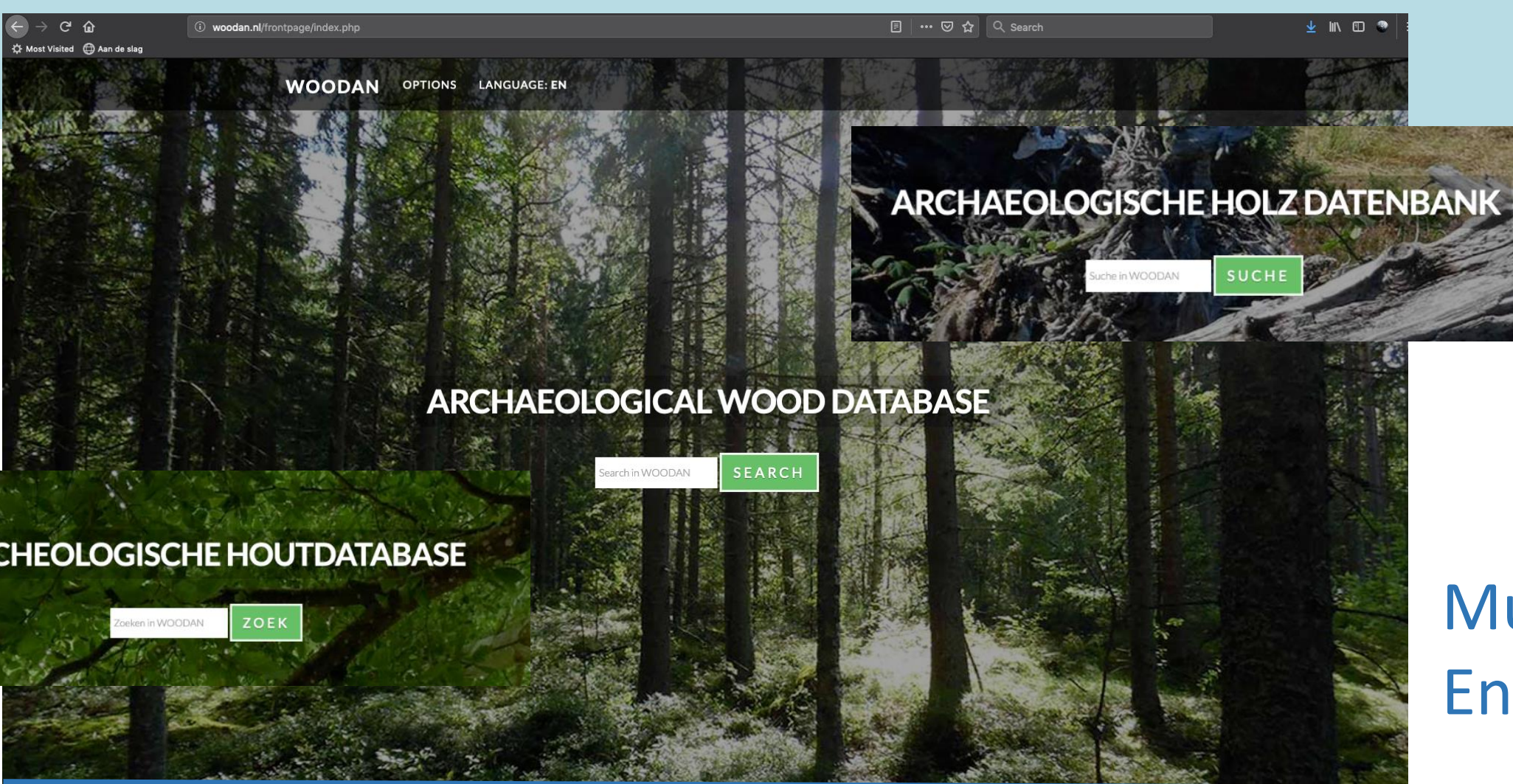
From this stable basis, we hope to be able to further develop the system through subsidies or donors and stimulate new research initiatives on (pre-)historical wooden objects.



WOODAN Foundation is looking for new partners!

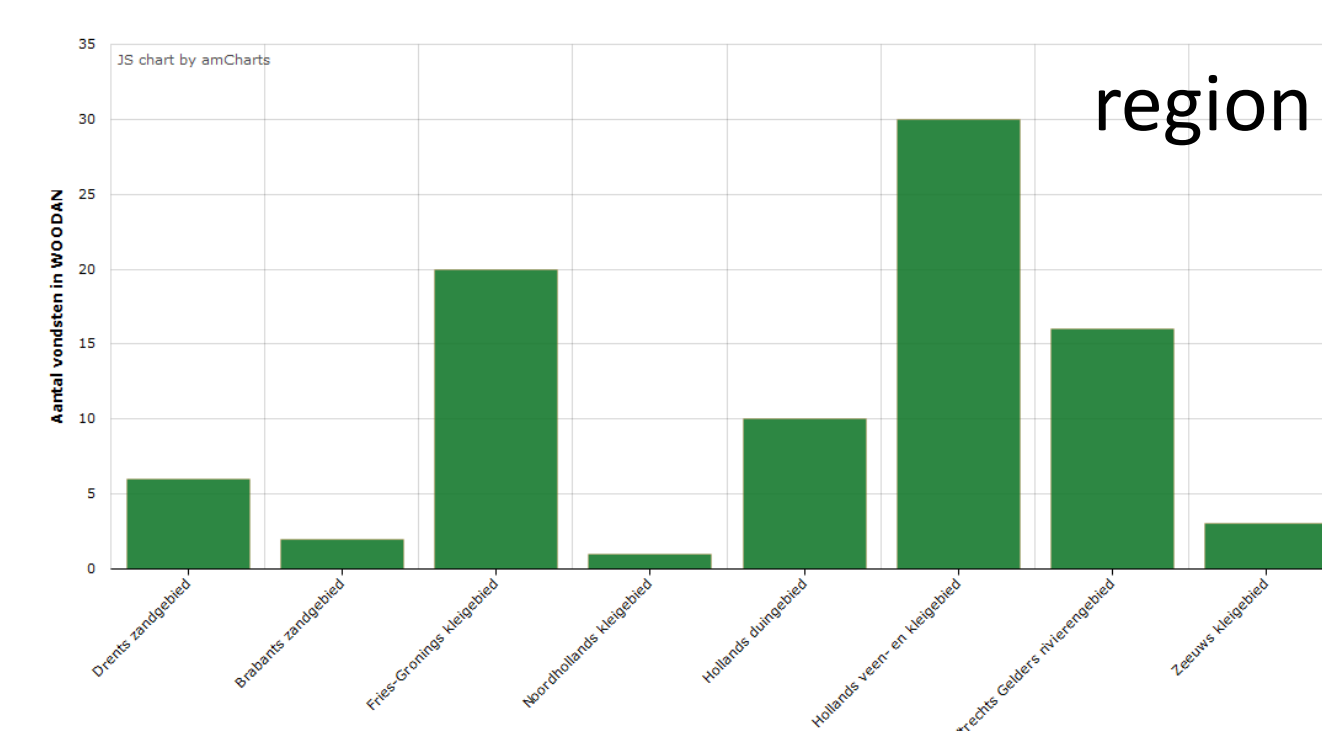
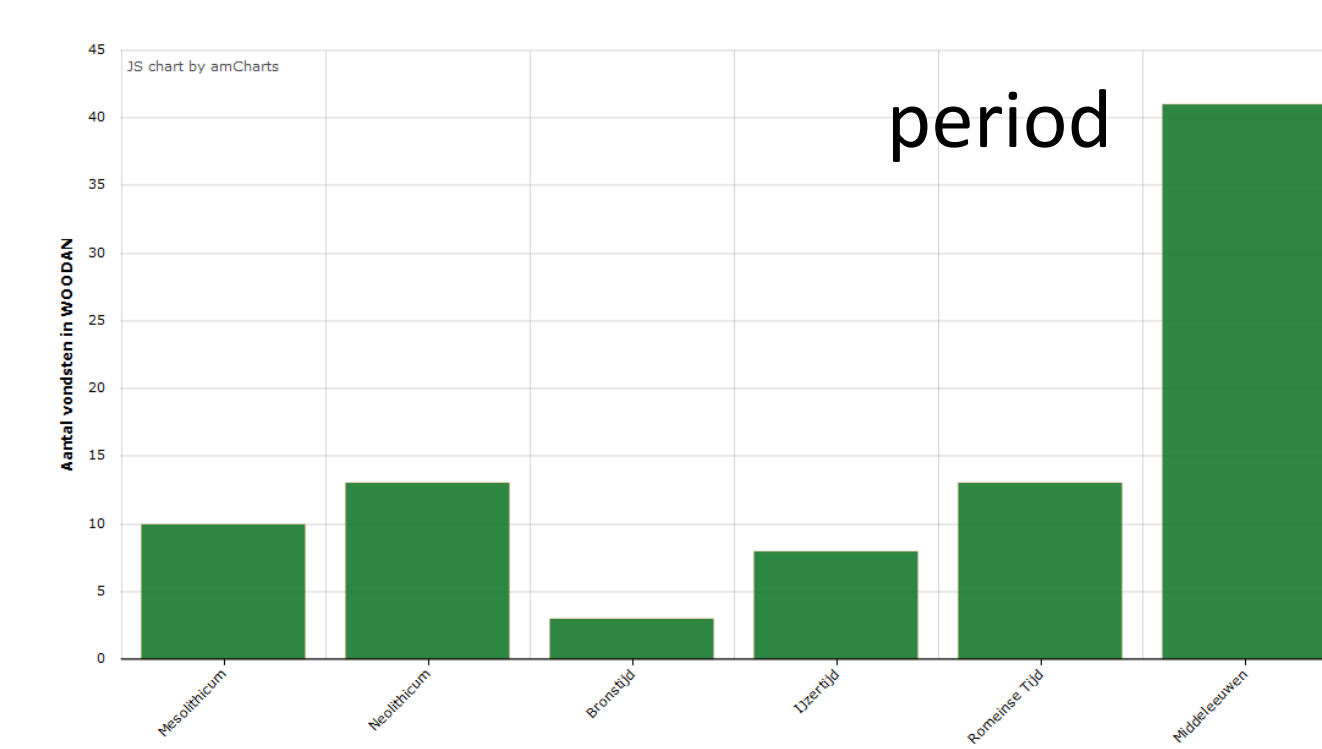
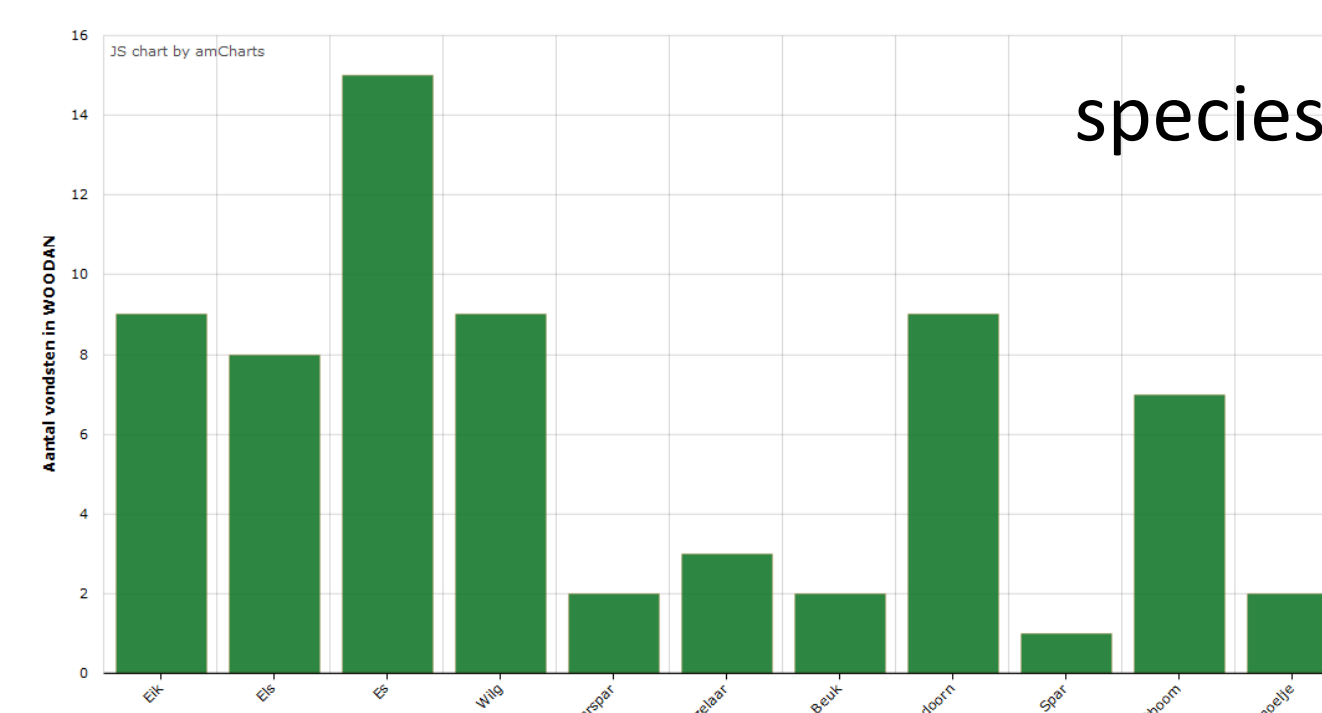
Ready to join?

Contact us: info@woodan.org



Interactive display of find location

Instant analysis and trend visualisation



Wooden objects (from Flanders – Belgium) are currently being added to the database

1787 ARTIFACTS 287 PHOTOS 178 WOOD SPECIES 209 LOCATIONS